

Using the GenTL Interface

Since runtime release 5.5, the Silicon Software runtime software includes a GenTL producer. This allows you to

- configure GenICam compatible cameras of diverse standards via the same (GenApi) interface; supported are the following standards:
 - Camera Link,
 - CoaXPress, and
 - CLHS.
- view the hierarchical structure of an image acquisition system, and
- develop generic applications (GenTL consumers) without considering the used camera standard.

The implemented GenTL producer provides GenTL 1.5.

Requirements

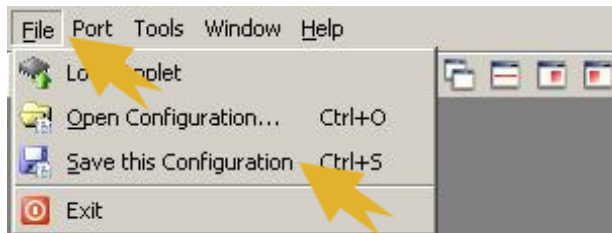
To use the GenTL interface, you must meet the following requirements:

- Your camera(s) is/are GenICam compatible.
- Runtime software version 5.5 (or higher) is installed on your host PC.
- You have defined an environment variable `SISO_GENTL_MCF` that points to a *.mcf file containing your applet configuration (see below).

Applet Configuration

To use a specific applet configuration, proceed as follows:

1. Configure the applet via `microDisplay`.
2. Save the applet configuration as a *.mcf file.



3. Define an environment variable `SISO_GENTL_MCF` that points to the *.mcf file containing the applet configuration.

After installing the Silicon Software runtime software version 5.5 (or higher), configuring the applet, and setting the environment variable, you are ready to use the GenTL interface provided by Silicon Software, for example, for camera configuration, or for developing a generic application (GenTL consumer).